



# FontExplorer<sup>®</sup> X Server

## User Guide for Windows

August 2011

by Linotype, a Monotype Imaging Company

## Copyright and Trademark Information

This document is protected by international and US copyright law and may not be reproduced or distributed either in part or in total without prior written consent of Linotype GmbH. This includes the storing of the information in electronic formats, in databases for information retrieval as well as translation into other languages.

The licensee is only allowed to transfer the software or pass on the accompanying written materials to third parties under the conditions set forth in the applicable License Agreement. This Copyright and Trademark Information does not constitute any rights, obligations, warranties or liabilities other than those set forth in the applicable License Agreement.



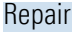
Information in this manual that refers to possible product extensions or to available accessories is not legally binding, especially because the product is subject to continuous adaptation and because the information may also relate to future development. The contents of this manual can change without prior notice and do not represent any legal obligation on the part of Linotype GmbH.

Linotype GmbH can neither be made liable for the correctness of information in this manual nor for damages resulting from the use of this information or the impossibility of using this information. FontExplorer is a trademark of Linotype GmbH registered in the U.S. Patent and Trademark Office and which may be registered in certain other jurisdictions. All other product and company names mentioned in this manual are trademarks of the respective companies. FontExplorer X Pro is protected by copyright law. Copyright © 2005-2011 Linotype GmbH, Bad Homburg, Germany. All rights reserved.

## How to Use this Guide

This guide is intended for users that connect to a **FontExplorerX Server**. It is designed to give you an overview of **FontExplorerX Server** functions. We recommend you read it carefully before you set up your server environment.

To make it easier to find the information you are looking for, we have used the following typographic conventions:

Keyboard shortcuts	Are displayed with Keystrokes	Example: Press  + 
Menus and menu options	Appear in bold print.	Example: The <b>File</b> menu
Field and folder names	Appear in italics.	Example: The <i>Filter</i> field
Dialogs	Appear in small caps.	Example: THE FONT DETECTION dialog
Areas in dialogs	Appear in italics	Example: <i>Character</i>
Pushbuttons	Appear with blue background	Example: 

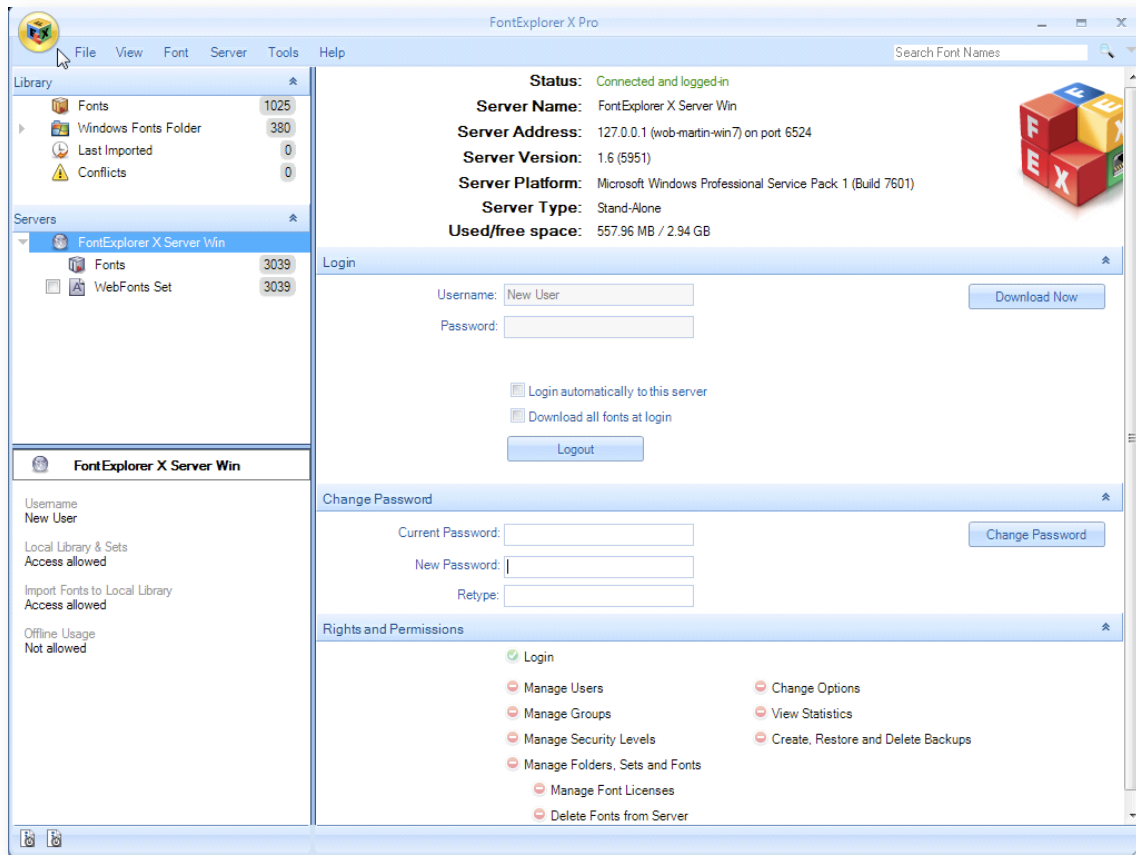
If you cannot find the information you need in this guide, check the Support section on [www.fontexplorerx.com](http://www.fontexplorerx.com).

If you have any suggestions on how we could improve this documentation, you are welcome to send your thoughts to [info@fontexplorerx.com](mailto:info@fontexplorerx.com).

# Table of Contents

<b>The Server View of FontExplorer X Pro</b>	<b>5</b>
<b>Access to Fonts via FontExplorer X Pro</b>	<b>6</b>
Downloading Fonts from the Server	7
Creating Server Sets and Folders	8
Offline Usage	8
<b>Support and Additional Information</b>	<b>9</b>
Imprint	9

## The Server View of FontExplorer X Pro



## Access to Fonts via FontExplorer X Pro

To connect to a FontExplorer X Server in your network please check the Source List of FontExplorer X Pro for server entries, all FontExplorer X Servers will be displayed here.



When a yellow icon is displayed next to the server entry in the Source List, the server is not available online and is operating in offline mode.

To log in to the Server:

1. Click the Servers entry in the Source List.
2. The Summary and Login pane of **FontExplorer X Server** appears.
3. Enter your user name and password (supplied by your administrator).



It may happen that a server is not visible in the Source List, e.g. when a network problem has occurred.

To connect to a server that is not listed in the Source List:

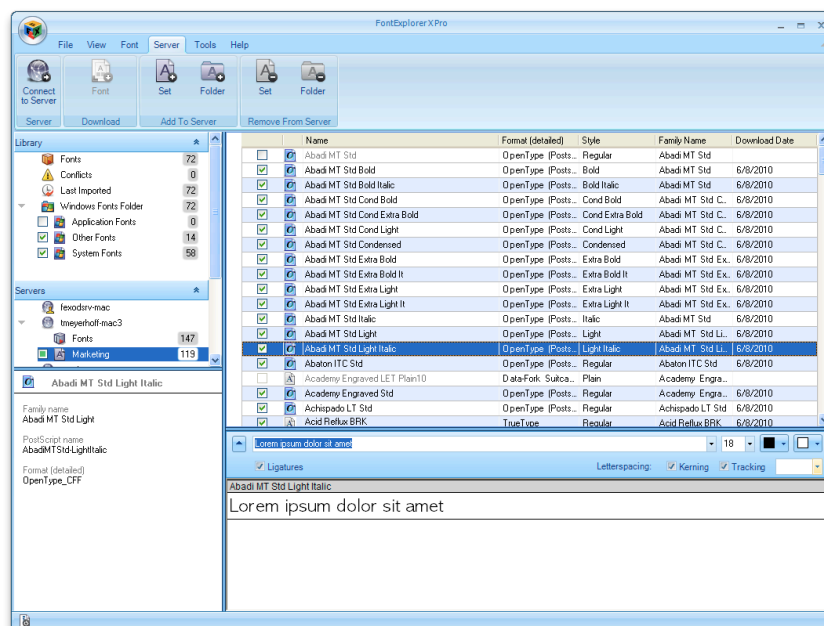
In the **Server** menu, click **Connect to Server** or press **Ctrl** + **k**.

Do the following:

- Enter the IP address of the server in the IP Address field.
- Enter the Port number in the Port field or use the default port.

To see a list of fonts that you have access to:

1. Click the Fonts entry below the Server name in the Source List.
2. Click a set in the Source List (here: Marketing):



3. In the Font List on the right you will then see a list of all fonts available to you.

## Downloading Fonts from the Server

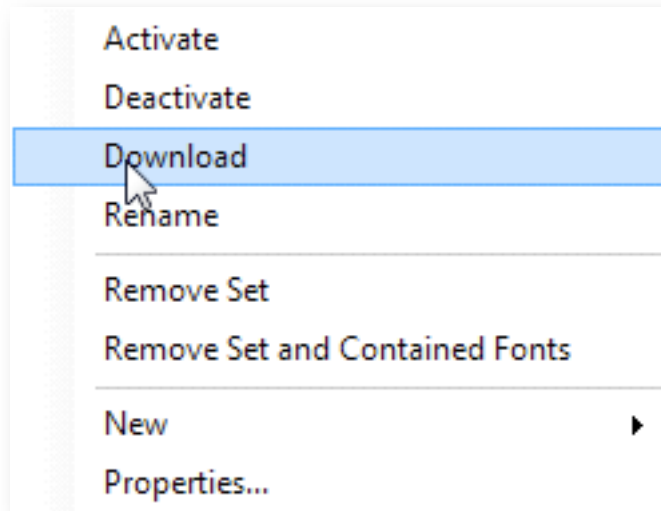
If you want to use fonts on a client they must be downloaded from the server first. The font(s) will be downloaded to a secured area on your machine. You can use the fonts in every application, see a preview and detailed information and activate or deactivate them in **FontExplorer X Pro**.



You cannot add server fonts to your local library or directly access the font files.

To download a font or a set of fonts from the server:

1. Right-click a set in the Servers area of the Source List
2. In the contextual menu, click **Download**



3. The font preview will now be displayed below the server Font List.

To select individual fonts in the Font List for download:

- Press **Ctrl** and select the fonts you want to download.



A preview is only available after a font has been downloaded from the server.

An automatic download will occur when attempting to activate a font that has not been downloaded.

Non-downloaded fonts will be displayed in grey in the font list.

For more information on the Preview function consult the **FontExplorer X Pro User Guide**.

## Creating Server Sets and Folders

To create a new Server Set or Server Folder you will need appropriate permission which is defined by your administrator. To generate a new Server Set or Server Folder proceed as follows:

1. Right-click in the Servers area of the Source List
2. In the contextual menu, click **New › New Set** or **New › New Folder**.

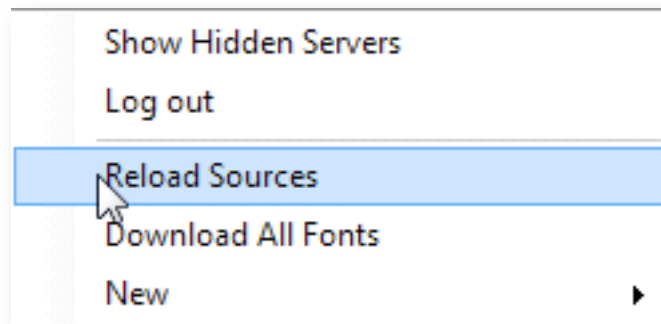
You can change the name by either double clicking on the server set or server folder. In the Details dialog the new name can be entered. Or select the server set or server folder and right-click and select **Rename** from the contextual menu. The name can now be edited directly in the source list.

## Reload Sources

This function allows updating the fonts on the client machine. This is of interest when a font has changed or when the license has been temporarily removed.

To refresh all fonts on a server

- Select the FontExplorer X Server in the source view
- In the contextual menu, click **Reload Sources**.



When Reload Sources is selected, the server cache files from the clients hard disk also will be cleaned.

## Offline Usage

If the administrator has given you permission to operate in offline mode, you will be able to access your server fonts even when disconnected from the FontExplorer X Server.

All fonts that you have downloaded prior to disconnecting from the server will be available to you. Your administrator can set your offline usage for a specific number of days or an unlimited amount of time. When the offline period expires, the server fonts will not be available to you until you reconnect to the FontExplorer X Server. The next time you disconnect from the server, the offline period begins anew.



## Support and Additional Information

Should you have questions regarding **FontExplorer X Server**, you will find further information on the FontExplorer X website at [www.fontexplorerx.com](http://www.fontexplorerx.com).  
Or just contact us by email at [support@fontexplorerx.com](mailto:support@fontexplorerx.com).

### Imprint

Linotype GmbH  
Werner-Reimers-Str. 2-4  
61352 Bad Homburg  
Germany  
E-mail: [info@linotype.com](mailto:info@linotype.com)  
Phone: +49 61 72 484-418  
Fax +49 61 72 484-429  
Registered in Bad Homburg, Germany, commercial register no. HRB10375  
Tax no. 32 381/8136  
Local revenue office: Bad Homburg, Germany  
VAT reg.no. DE250989316  
Managing Director: Frank Wildenberg

This manual was created using the Linotype Univers typeface family.